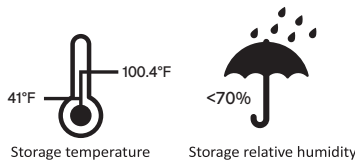


Ironwear
2020 Seabird Way
Riviera Beach, FL 33404
Tel: (800) 329-2235
support@ironwear.com
www.ironwear.com

Doc.1 Rev.1



1523 User Instructions



Warnings:

Please check the following items prior to use. The body and every component of the respirator should be in good condition without any damage. Misuse may result in sickness or death.

1. Failure to follow all instructions and limitations on the use of this product could reduce the effectiveness of respirator and may result in sickness or death.
2. Selecting the right respirator is essential to protect your health. Before using this respirator, consult an industrial hygienist or Occupational Safety Professional to determine the suitability for your intended use.
3. This respirator does not supply oxygen and must not be used in atmospheres containing less than 19.5% oxygen.
4. Do not use when concentrations of contaminants are immediately dangerous to health or life.
5. Do not use the respirator in an explosive environment.
6. Leave work area immediately and go to places with fresh air if breathing becomes difficulty, or other distress occurs.
7. Do not use with beards or other facial hair which may inhibit contact between the face and the edge of the respirator.
8. Never alter, modify or abuse this respirator.
9. Only for single use. No maintenance needed. Dispose the used respirator after single use.
10. Change respirator immediately if breathing becomes difficult or respirator becomes damaged or distorted, or a proper face fit can't be maintained.
11. Store unused respirators in box in a clean, dry, non-contaminated area.

Use against:

N95-Particulate Filter (95% filter efficiency level) Effective against particulate aerosols free of oil; time use restrictions may apply.

Contraindications:

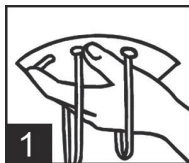
1. Do not use with beards or other facial hair that may inhibit contact between the face and the edge of the respirator.
2. Do not use the respirator when concentrations of particles exceed the maximum use concentration or 10 times the OSHA Permissible Exposure Limit, whichever is lower.
3. Do not use against gases, vapors, asbestos, paint spray, sandblasting, or particulate materials which generate harmful vapors.
4. Do not use against oil-based mists.

S - Special or Critical User Instructions

This respirator has been approved as NIOSH N95 filtering facepiece respirator, for use in healthcare settings, as a Surgical N95 Respirator conforming to recognized standards for biocompatibility, flammability, and fluid resistance at 120mmHg. The model/part number 1523 has been manufactured by Rizhao Sanqi Medical & Health Articles Co., Ltd. for private label Company Ironwear under TC-84A-9323.

Checkpoints prior to use:

1. Filtering facepieces are to be inspected prior to each use to assure there are no holes in the breathing zone other than the punctures around staples and no damage has occurred.
2. Enlarged holes resulting from ripped or torn filter material around staple punctures are considered damaged. A new respirator should be replaced with the damaged one.
3. Respirator has been tested and small punctures around the staples are normal and do not interfere with the respirator compliance with Part 84 approval requirements.
4. Check the straps are firm enough to pull over your head.
5. Check the nosepiece and inner sponge area are glued closely on the respirator.
6. Check the valid date which is printed on the bottom of box.



-1-

Fitting instructions:

Before occupational use of this respirator a written respiratory protection program must be implemented meeting all the local government requirements. In the United States employers must comply with OSHA 29 CFR 1910.134 which includes medical evaluation, training, and fit testing.

For more information, please see OSHA's website at <http://www.osha.gov>.

1. Cup the respirator in your hand with the nose piece at your fingertips allowing the headbands to hang freely below your hand.
2. Cup the respirator firmly against your face with the nose piece on the bridge of your nose. Pull the bottom strap over your head positioning it around the neck below ears.
3. Pull the top strap over your head resting it high at the top back of your head.
4. Press soft nose piece to conform comfortably around the nose.
5. CHECK FOR LEAK-TIGHTNESS (FACIAL FIT) AS FOLLOWS:

- ◆ place both hands over the respirator and exhale sharply
- ◆ positive pressure should be inside the respirator
- ◆ if you feel air escaping around the edges, re-adjust the respirator by tightening the nose-piece
- ◆ repeat the procedure until satisfactory face-fit has been achieved.

Strictly following these instructions is an important step in safe respirator use.

Note -do not use with beards or other facial hair that may inhibit contact between the face and the edge of the respirator.

Respiratory protection only effects when it is selected, fitted and worn correctly throughout the time that the wearer is exposed to hazards.



Ironwear
2020 Seabird Way, Riviera Beach, FL 33404, USA
(800) 329-2235

THIS RESPIRATOR IS APPROVED ONLY IN THE FOLLOWING CONFIGURATION:

TC	Protection ¹	Respirator	Cautions and Limitations ²
		1523	
84A-9323	Surgical N95	X	ABCJM NOS

1. Protection

N95-Particulate Filter (95% filter efficiency level) Effective against particulate aerosols free of oil; time use restrictions may apply.

2. Cautions and Limitations

- A - Not for use in atmospheres containing less than 19.5% oxygen.
- B - Not for use in atmospheres immediately dangerous to life or health.
- C - Do not exceed maximum use concentrations established by regulatory standards.
- J - Failure to properly use and maintain this product could result in injury or death.
- M - All approved respirators shall be selected, fitted, used, and maintained in accordance with MSHA, OSHA and other applicable regulations.
- N - Never substitute, modify, add, or omit parts. Use only exact replacement parts in the configuration as specified by the manufacturer.
- O - Refer to users instructions, and/or maintenance manuals for information on use and maintenance of these respirators.
- S - Special or critical User Instructions and/or specific use limitations apply. Refer to User Instructions before donning.

-2-