



**Innosparks Pte Ltd**  
75 Ayer Rajah Crescent #02-13  
Singapore 139953  
+65-6873-2074



THIS RESPIRATOR IS APPROVED ONLY IN THE FOLLOWING CONFIGURATION:

TC-	Protection <sup>1</sup>	Respirator	Accessory		Cautions and Limitations <sup>2</sup>
		AP522VL	APR	USB	
84A-7842	N95	X	X	X	ABCJMNOPS

#### 1. Protection

N95- Particulate Filter (95% filter efficiency level) Effective against particulate aerosols free of oil; time use restrictions may apply
--

#### 2. Cautions and Limitations

- A - Not for use in atmospheres containing less than 19.5% oxygen.
- B - Not for use in atmospheres immediately dangerous to life or health.
- C - Do not exceed maximum use concentrations established by regulatory standards.
- J - Failure to properly use and maintain this product could result in injury or death.
- M - All approved respirators shall be selected, fitted, used, and maintained in accordance with MSHA, OSHA, and other applicable regulations.
- N - Never substitute, modify, add, or omit parts. Use only exact replacement parts in the configuration as specified by the manufacturer.
- O - Refer to User's Instructions, and/or maintenance manuals for information on use and maintenance of these respirators.
- P - NIOSH does not evaluate respirators for use as surgical respirators.
- S - Special or critical User Instructions and/ or specific use limitations apply. Refer to User Instruction before donning.

# **AIR+ SMART MASK**

## **With Micro Ventilator**

### **Instructions for use**

1. The instructions for use and warning are guides to the proper use of the respirator and to prevent health risk. They must be carefully read, completely understood and properly followed. If using the respirator in work environment: the wearer of the respirator must be well trained to use it properly before starting work.
2. Before the occupational use of this respirator, a written respiratory protection program must be implemented meeting all the local government requirements. In the United States employers must comply with OSHA 29 CFR 1910.134 which includes medical evaluation, training, and fit testing.
3. No alteration or modification is allowed to the respirator. The respirator should not be worn when it is contaminated (eg. dusty, wet, etc) or damaged (eg. Broken part, hole, etc). The contaminated or damaged respirator must not be used and must be replaced with a new one.
4. The respirator must not be used continuously for more than a single work shift. Always replace with a new respirator, whenever the breathing resistance becomes excessive or after using continuously for a single work shift.
5. The valve cap is reusable. To clean and disinfect, please wipe its surface with a damp and soft cloth or wet tissue or alcohol wipe. Do not use strong chemical or abrasive solvent to clean the valve cap.
6. While in use, avoid touching the respirator. It is important to consider the respirator as potentially contaminated upon removal and user should wash hands thoroughly with soap and water or using an alcohol-based hand-rub.

7. To remove the respirator, handle only the elastic bands starting with the bottom and then the top. Lift the respirator away from the face and discard properly in a designated waste receptacle.

8. The "Lot" code represents the production date in yyyy/mm/dd format. The "Exp" represents the expiry date in yyyy/mm/dd format.

## **Storage**

The respirator must be stored in its original packaging and stored in a clean, cool and dry atmosphere to ensure that it is protected against dust, chemicals, moisture, excessive heat and direct sunlight.



-5°C – 50°C

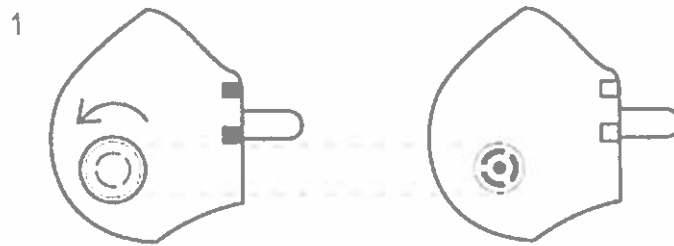


<85%

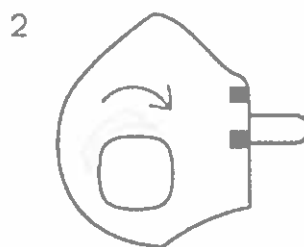


## User Instructions for Micro Ventilator

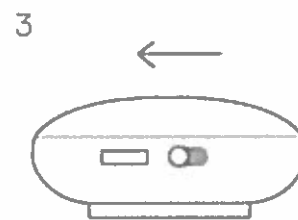
1. For use of the respirator with the micro ventilator, please attach and switch on the micro ventilator before wearing the respirator.



**TO ATTACH MICRO VENTILATOR**  
Twist valve cap anti-clockwise to remove



**ALIGN & TWIST**  
Align the Micro Ventilator opening with the mask valve catch, twist clockwise to fasten securely



**SWITCH ON**  
Slide the button left to switch on the Micro Ventilator  
Green = Switched on

**NOTE:** Micro Ventilator requires charging before use. Red LED will light up when charging and go off when fully charged.

2. The operating time of the Micro Ventilator is estimated at 2.5 hours. The respirator can still be used independently even when the micro ventilator stops working or if the micro ventilator is not attached. Ensure that only the original Micro Ventilator is used on the respirator.

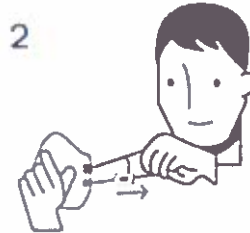
3. The Micro Ventilator needs to be fully charged prior to initial use. It can be recharged using the attached USB cable by connecting to a powered USB port or power bank. Please note, for safety reasons, it is not advised to use any other USB cable aside from the one provided with the device.
4. Once charging begins, a red LED light on the Micro Ventilator will light up. The charging time of the Micro Ventilator is estimated at 1.5 hours. The red LED light will turn off once charging is complete.
5. The Micro Ventilator is re-usable. To clean and disinfect, please wipe its surface with a damp and soft cloth or wet tissue or alcohol wipe. Do not use strong chemical or abrasive solvent to clean the Micro Ventilator. Please ensure that the Micro Ventilator is switched off and disconnected from any power source before cleaning.
6. The ventilator interior may be disinfected by the use of Isopropyl Alcohol (IPA, at least 70% V/V) sprayed directly into the ventilator inlet through the use of a pump-type atomiser. To do so, spray two pumps of the IPA into the ventilator inlet while the unit is switched off. After spraying, switch on and wait for the IPA to fully dry out before using the ventilator again.
7. The Micro Ventilator Battery should be fully recharged every 6 months during long-term storage.

## User Instructions for Respirator



### **Open & Fit**

With the valve on the left open, place mask over face to check for the right fit.



### **Adjust Lower Strap**

Pull the lower strap and fit it over your head, below your ear.



### **Fit Upper Strap**

Stretch the upper strap over your head, above the ear.



### **Adjust**

Press on nose clip with both hands to ensure tight fit around face.



### **Blow To Check**

If air leaks from edges, readjust mask and straps to correct fit.



1. Before using, check the respirator for holes, tears or other damage to its surface, strap and/or nose cushioning to ensure that your respirator works well. Replace with a new respirator, if damaged or damp.

2. Select the right respirator size to fit your face. Consult the given size chart on the box for size selection. If your selected size fails to fit your face properly, choose another size until the proper size to fit your face is obtained. Please refer to procedures 3 to 5 below.

3. Fold the nose clip into a  shape for a proper fit.

4. The respirator strap can be adjusted for proper fit. Pull the strap outwards at either side of the buckle for tighter fit; push the strap inwards at either side of the buckle for looser fit.

5. To ensure a tight seal on your face, cover the middle surface of the respirator with one hand and exhale deeply. Do not push the respirator against your face. If you feel air blowing at your face or eyes, the respirator's position and strap needs to be re-adjusted. Repeat the above steps until you do not feel air blowing at your face or eyes.

6. For use of the respirator with the micro ventilator, Fit check should be performed with the Micro Ventilator attached.

## **Special or critical User Instructions**

1. The mask should be used with the valve cap, unless it is used with the Micro Ventilator device (available separately). Do not remove the mask or change its accessory unless you are in an uncontaminated area.
2. If this respirator is intended to be used with the micro ventilator, OSHA fit testing should be performed with the ventilator turned on.
3. Model AP522VL filtering facepiece has been manufactured by Champak Enterprise Co., Ltd. for Innosparks Pte Ltd under TC-84A-7842.

## **Safety and Precaution**

1. The Micro Ventilator contains lithium polymer battery. Improper use or storage may result in battery leak or expansion, and may cause conflagration, property loss or health harm.
2. Operating temperature range of the Micro Ventilator is from -5°C to 35°C. Do not expose Micro Ventilator to fire or high temperature. When not in use please store the Micro Ventilator in a clean, cool and dry atmosphere.
3. Micro Ventilator is rated IP53. However, it should not be washed or submerged into water.
4. The Micro Ventilator should only be charged using proper certified micro-USB cable (supplied) and socket.
5. Please disconnect any cable from Micro Ventilator before using it on the respirator. Do not short-circuit battery. Do not reverse-charge or reverse-connect.
6. Do not drop, shake, puncture or disassemble the Micro Ventilator or its components. Once the Micro Ventilator or its components are damaged, do not continue to use it.
7. Please dispose all parts in accordance to local regulation. The lithium polymer battery should be recycled and should not be disposed as general litter.
8. The "Lot" code represents the production date in yyyy/mm/dd format.